

Heritage

COLLECTION

★ ★ ★

*Very traditional, affordable home plans
from 1060 square feet to 2300 square feet*



ABOUT RITZ-CRAFT

Founded in 1954, and still family owned and operated, Ritz-Craft specializes in “system built homes” that are custom built off site in one of five climate controlled facilities. These components are then transported to the site, installed on the foundation and completed by a local partnering builder.



Ritz-Craft home plans offer wide variety and are designed to embrace each region’s architecture while offering many aesthetically pleasing and functional features. Building your new home with Ritz-Craft’s custom designed modules offers many advantages over conventional “stick by stick” site assembly. Our precision construction methods take place under roof in well lighted, climate controlled and efficient workstations that allow high quality and high efficiency. In fact, our quality assurance process includes code compliance inspections by a state licensed third party agency and over twenty-five key inspection checkpoints monitored by our in-house Quality Assurance Team. Ritz-Craft also utilizes many Green Friendly materials and processes to save energy, recycle materials, and to manage waste in an environmentally responsible manner.



Eric John, Vice President

Paul D. John, President/CEO



When you choose Ritz-Craft, you’re selecting an experienced company with a commitment to quality and to the future. We have grown from a modest one-plant operation into a thriving enterprise with over one million square feet of climate controlled production space in five modern highly mechanized plants. Some people ask if our homes are built as well as a site built home....and our proud reply is “yes, --- as well, and in many respects, better.” We say that with confidence knowing our process simply cannot be matched with in-field home building methods.

We’re proud of our custom built single story, cape cod style, and two story homes and we sincerely thank you for considering Ritz-Craft Corporation for your next home.



Ritz-Craft Family of Companies

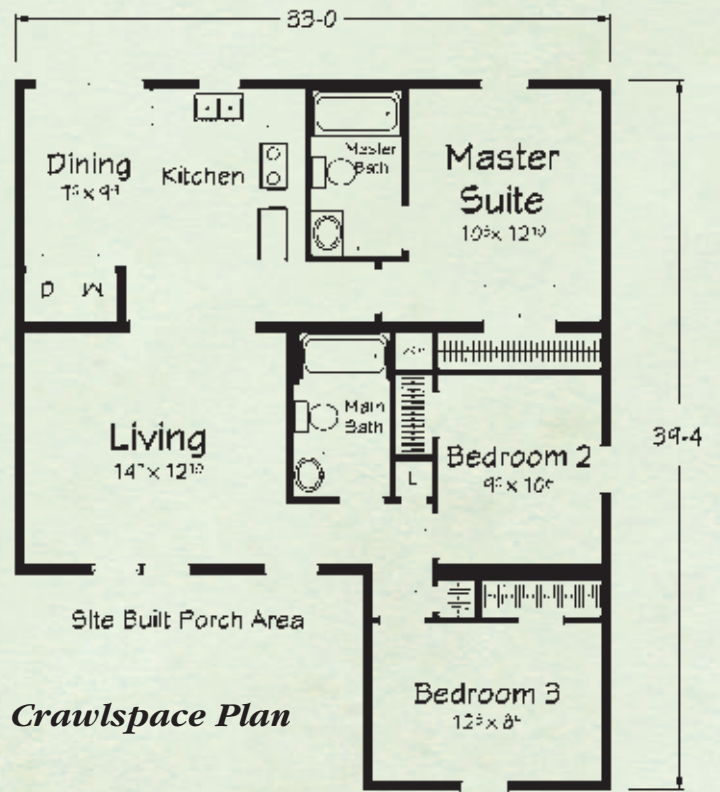
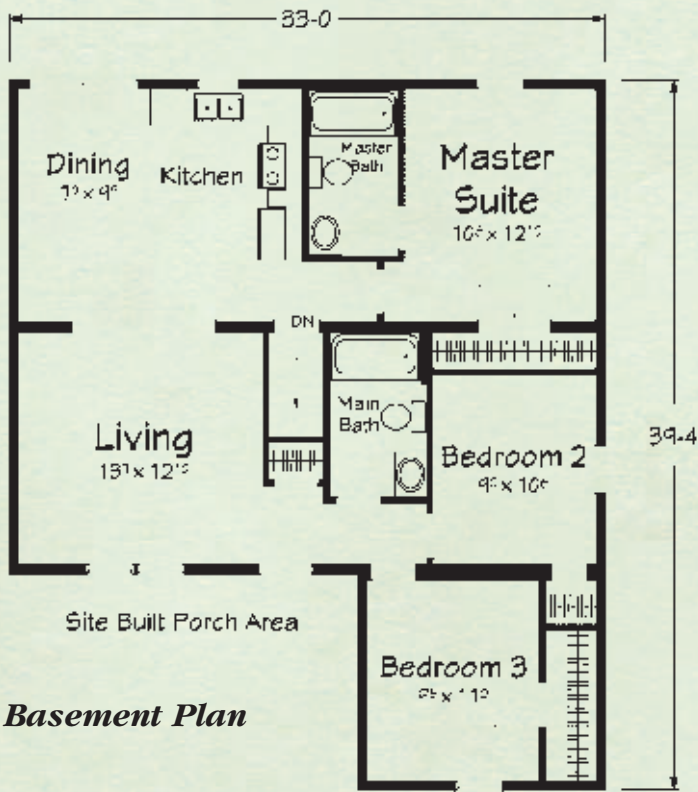
Our family of companies also includes Ritz-Trans, Legacy Crafted Cabinets and Legacy Building Products. Ritz-Craft also provides construction to permanent mortgage financing through Ritz-Craft Home Mortgage, LLC.



BEAUFORT



Ranch
1066 Square Feet



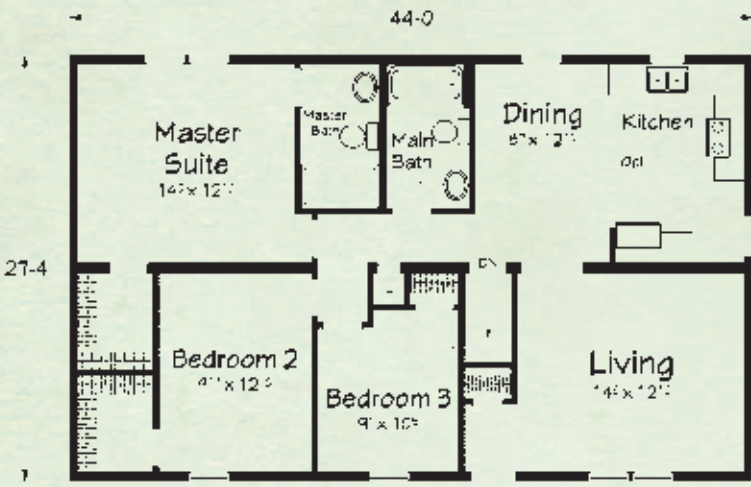
Artist renderings depict homes as they may be built on a typical site. Renderings may include optional or site installed features. Refer to "Heritage Collection" specifications and be sure to thoroughly discuss all aspects of your building project with your homebuilder.



MAYBERRY II

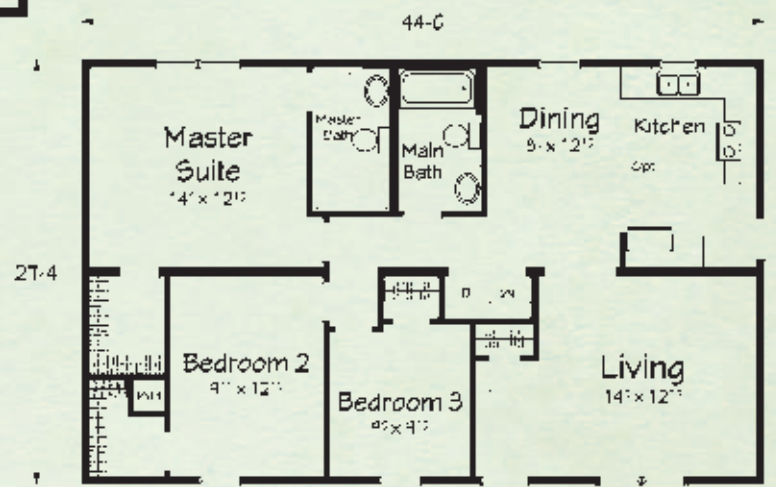
Ranch

1202 Square Feet



Basement Plan

Site Built Porch Area



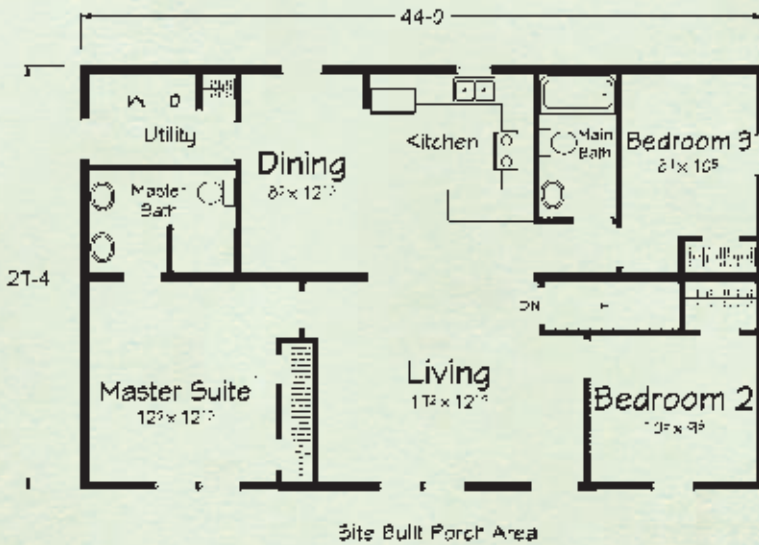
Crawlspace Plan

Site Built Porch Area

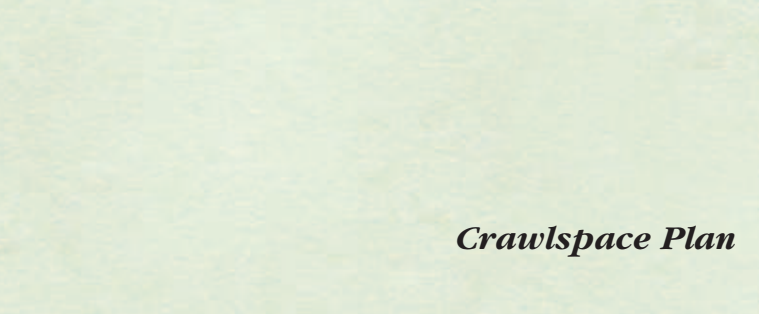
GLENDALE



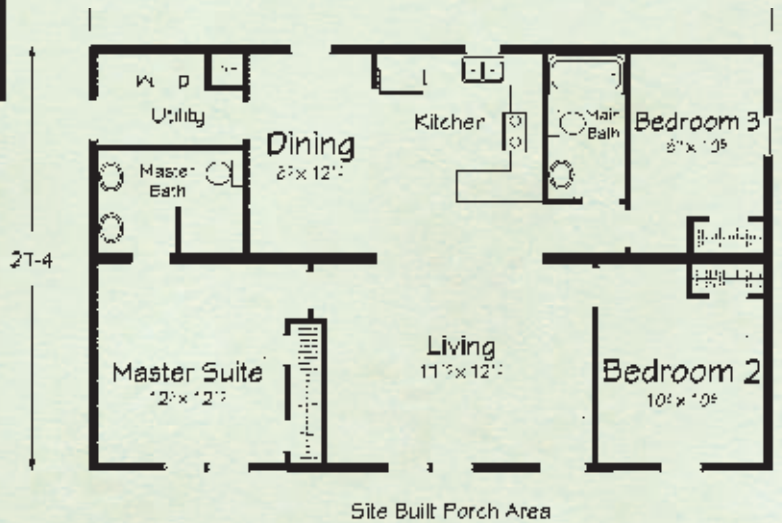
Ranch
1202 Square Feet



Basement Plan



Crawlspace Plan



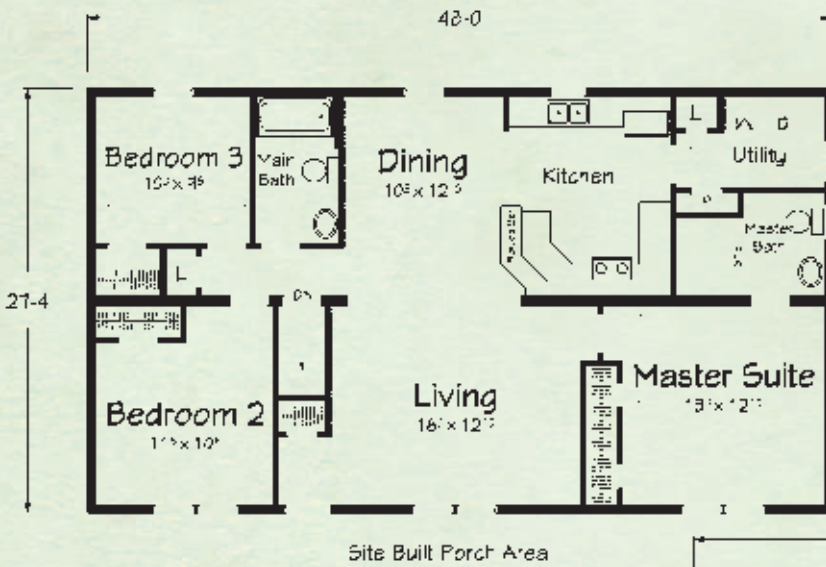
Artist renderings depict homes as they may be built on a typical site. Renderings may include optional or site installed features. Refer to "Heritage Collection" specifications and be sure to thoroughly discuss all aspects of your building project with your homebuilder.



LOCKWOOD

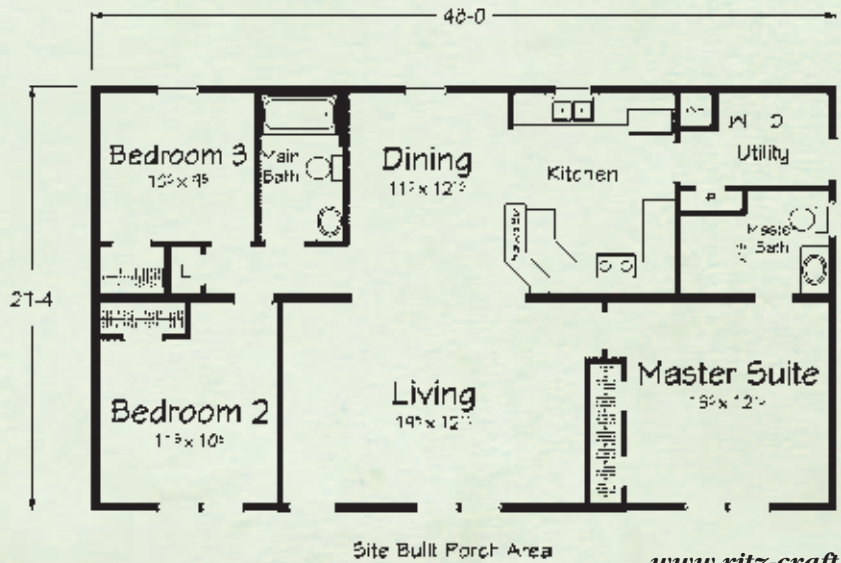
Ranch

1312 Square Feet



Basement Plan

Crawlspace Plan



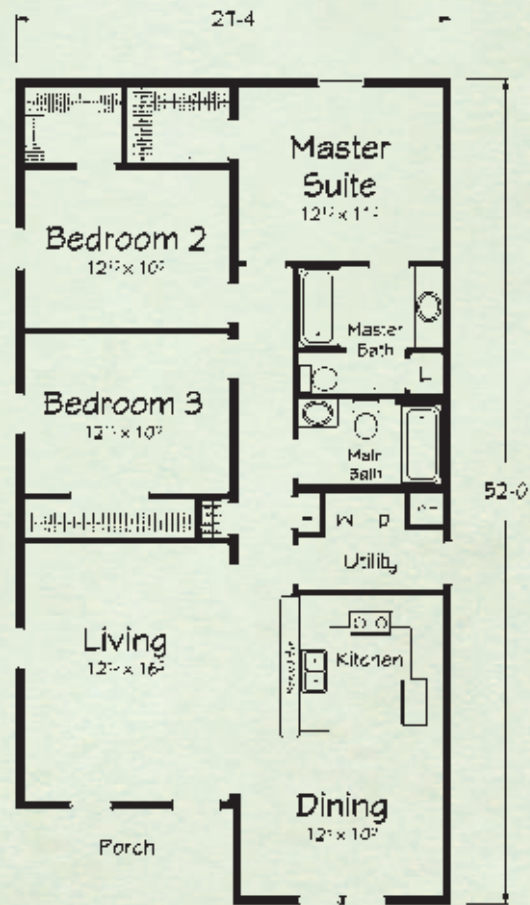
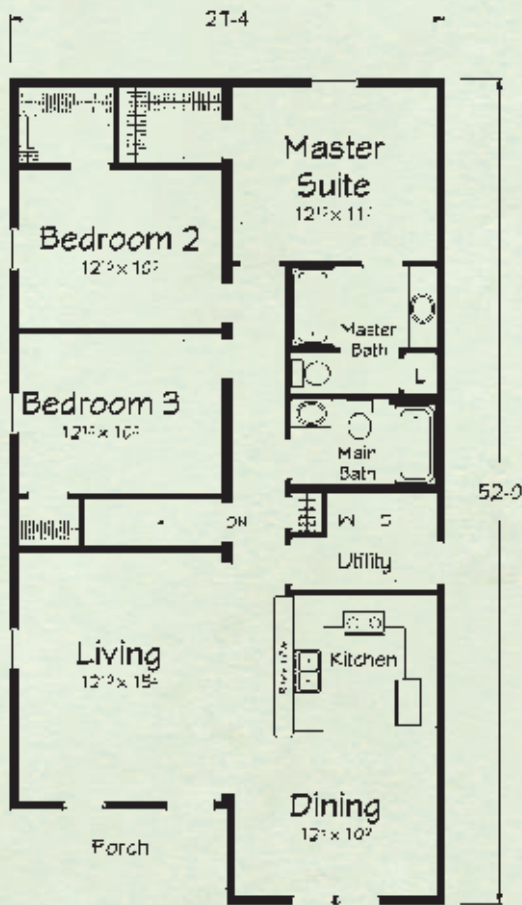
CALABASH



Ranch
1339 Square Feet

Basement Plan

Crawlspace Plan



Artist renderings depict homes as they may be built on a typical site. Renderings may include optional or site installed features. Refer to "Heritage Collection" specifications and be sure to thoroughly discuss all aspects of your building project with your homebuilder.



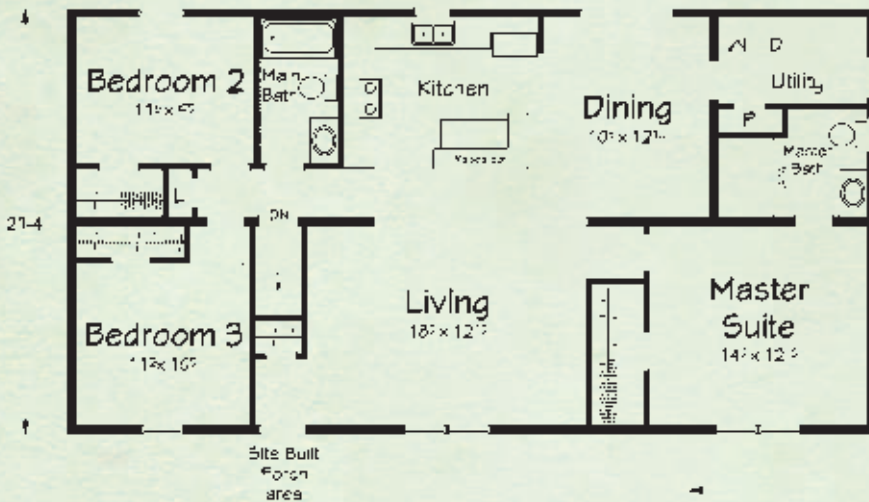
NIAGARA

Ranch

1422 Square Feet

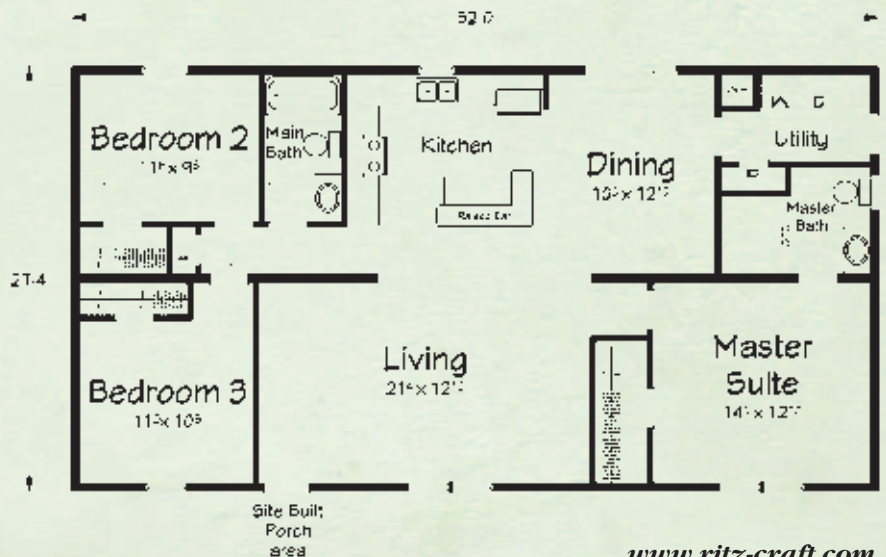


52-0



Basement Plan

Crawlspace Plan



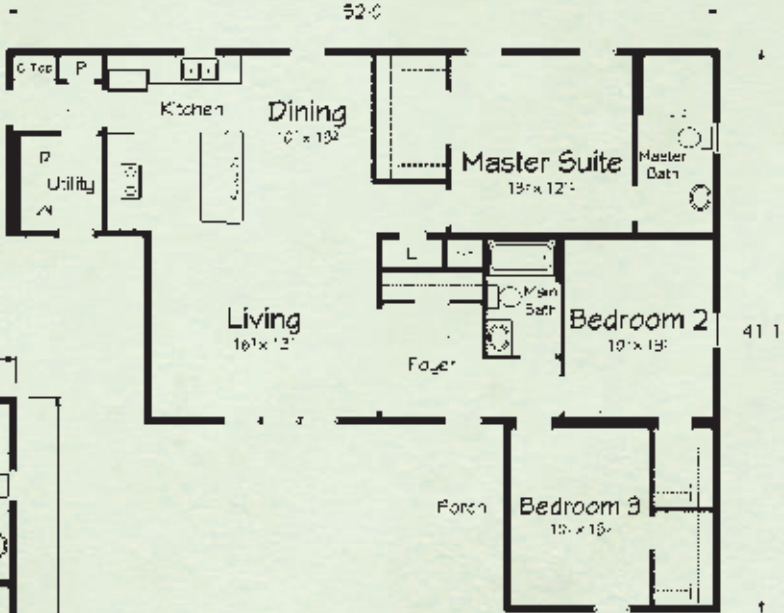
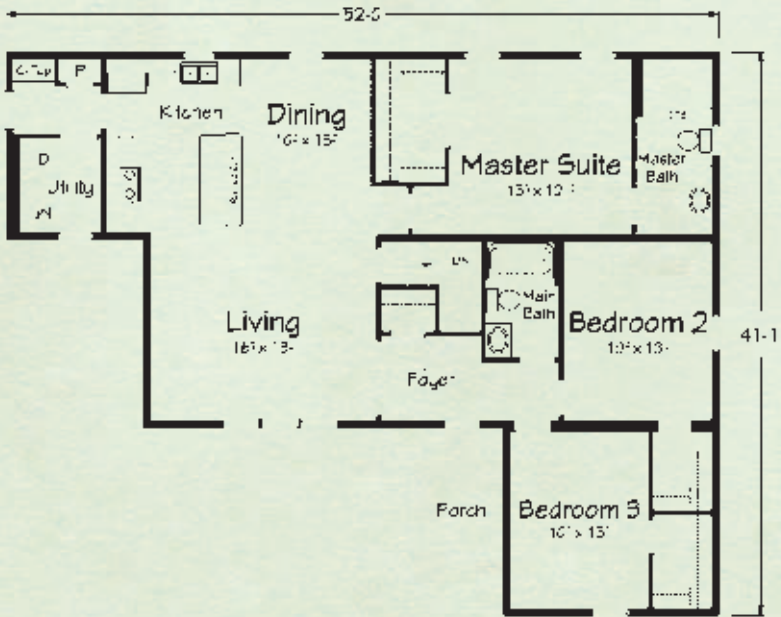
MARYVILLE

Ranch

1501 Square Feet



Basement Plan



Crawlspace Plan

Artist renderings depict homes as they may be built on a typical site. Renderings may include optional or site installed features. Refer to "Heritage Collection" specifications and be sure to thoroughly discuss all aspects of your building project with your homebuilder.



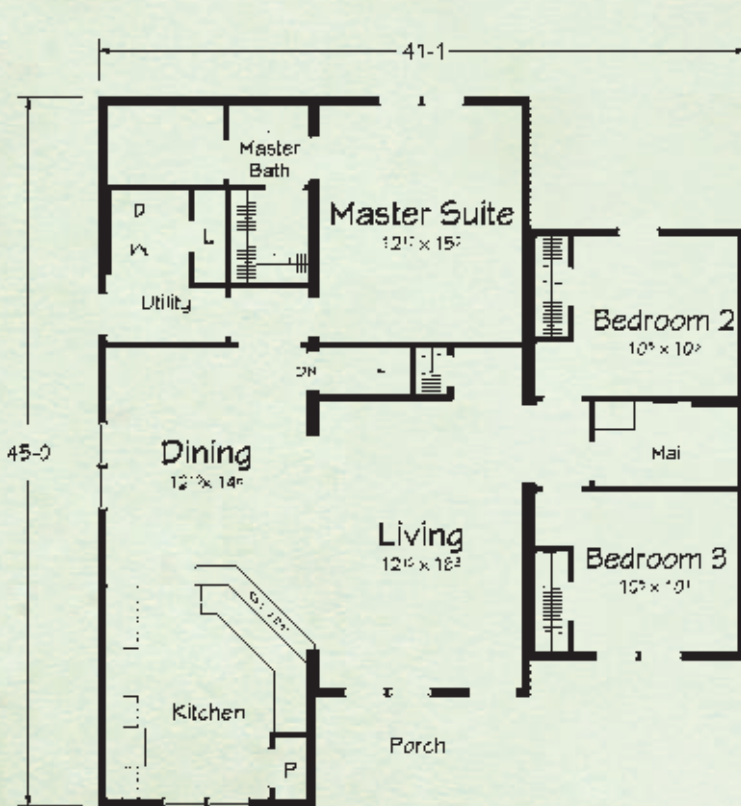
APPLETON

Ranch

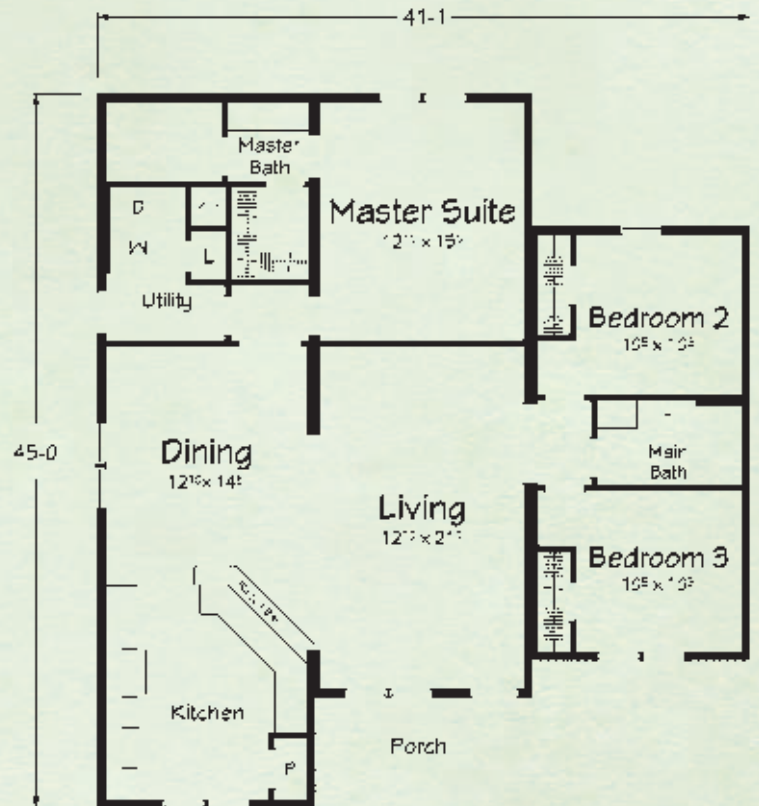
1510 Square Feet



Basement Plan



Crawlspace Plan



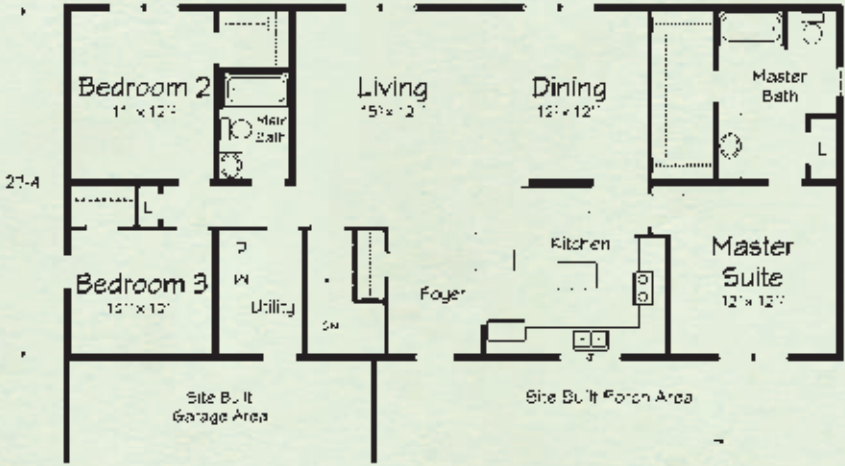
LONGFIELD

Ranch

1640 Square Feet

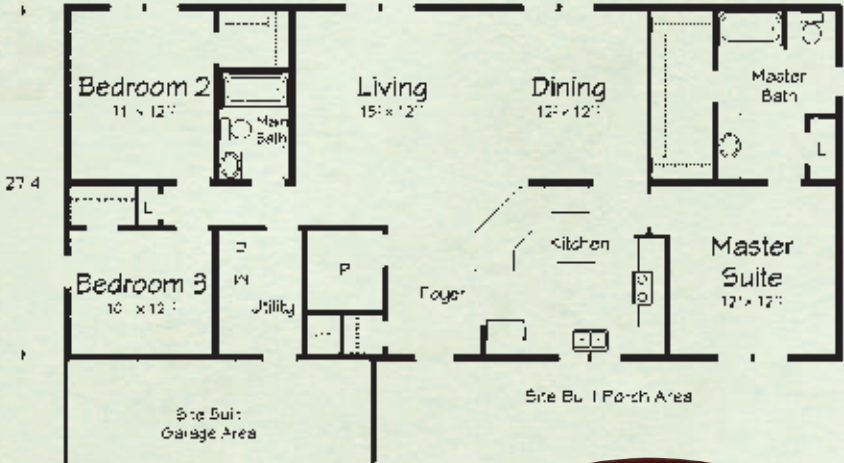


60-0



Basement Plan

60-0



Crawlspace Plan

Artist renderings depict homes as they may be built on a typical site. Renderings may include optional or site installed features. Refer to "Heritage Collection" specifications and be sure to thoroughly discuss all aspects of your building project with your homebuilder.



HITHERWOOD

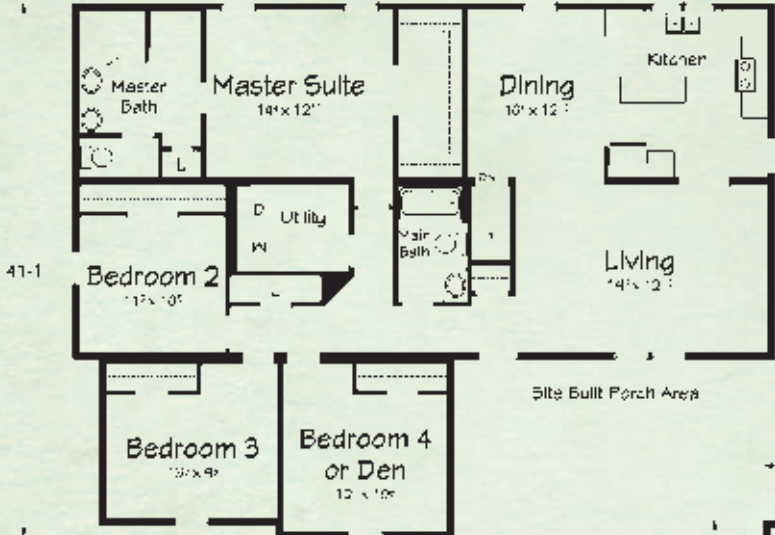
Ranch

1838 Square Feet



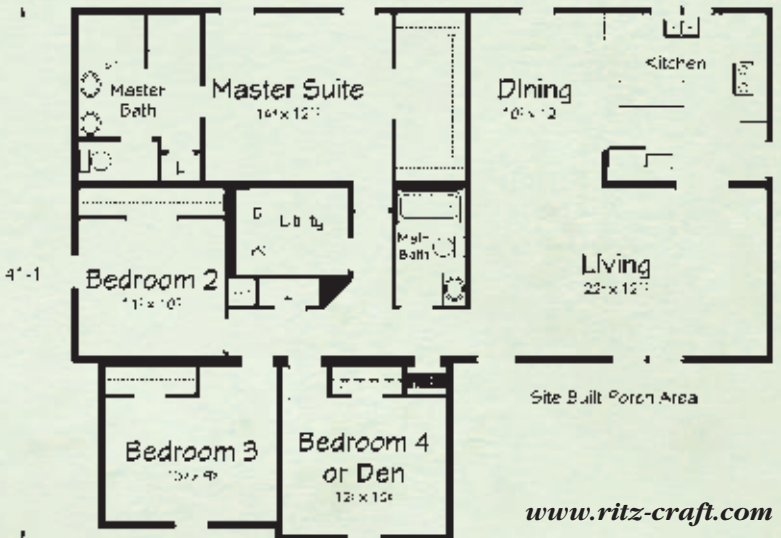
54-0

Basement Plan



54-0

Crawlspace Plan



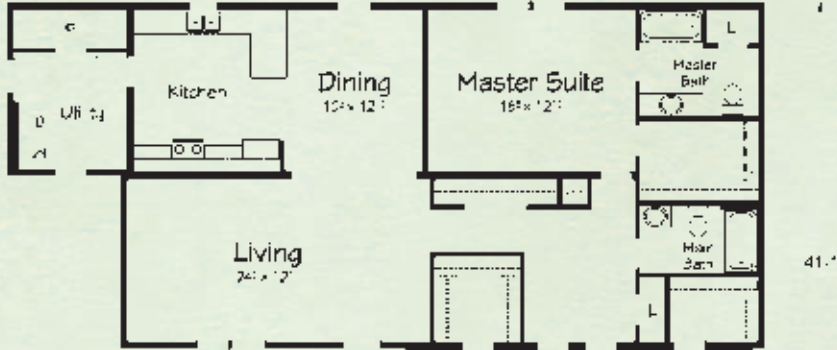
BLOOMVILLE

Ranch

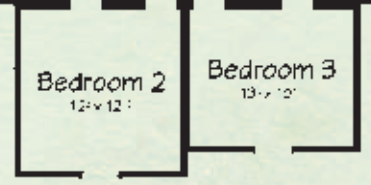
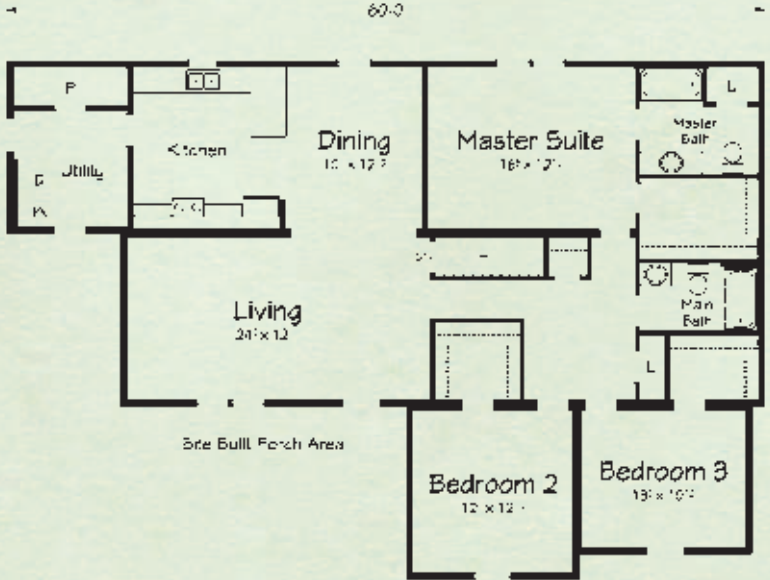
1865 Square Feet



60'-0"



Basement Plan



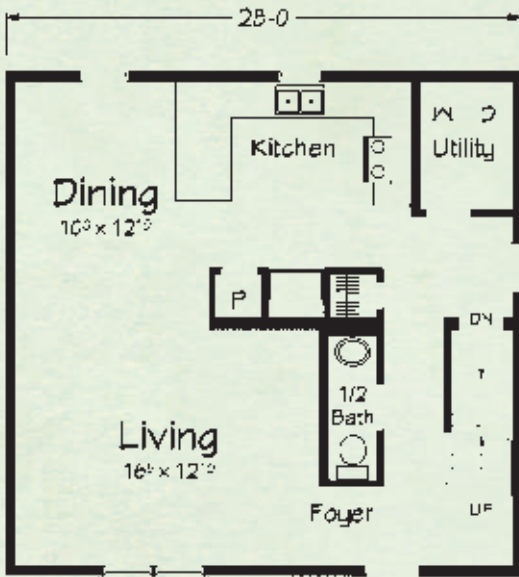
Crawlspace Plan

Artist renderings depict homes as they may be built on a typical site. Renderings may include optional or site installed features. Refer to "Heritage Collection" specifications and be sure to thoroughly discuss all aspects of your building project with your homebuilder.



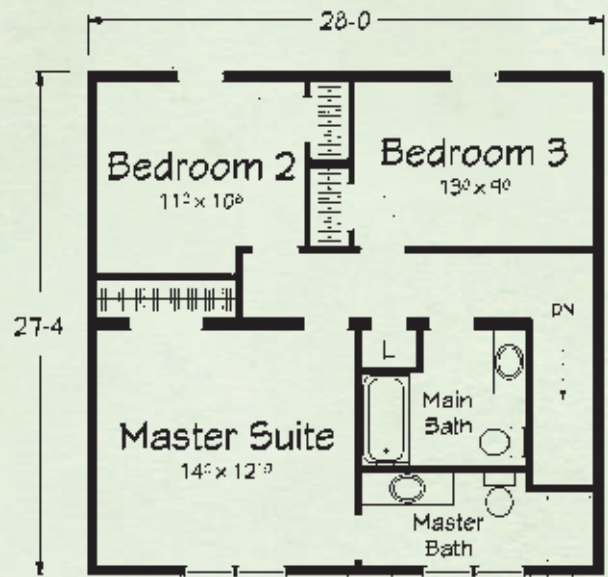
AVONLEA

Two Story
1530 Square Feet



Site Built Porch Area

First Floor



Second Floor

Heritage
COLLECTION

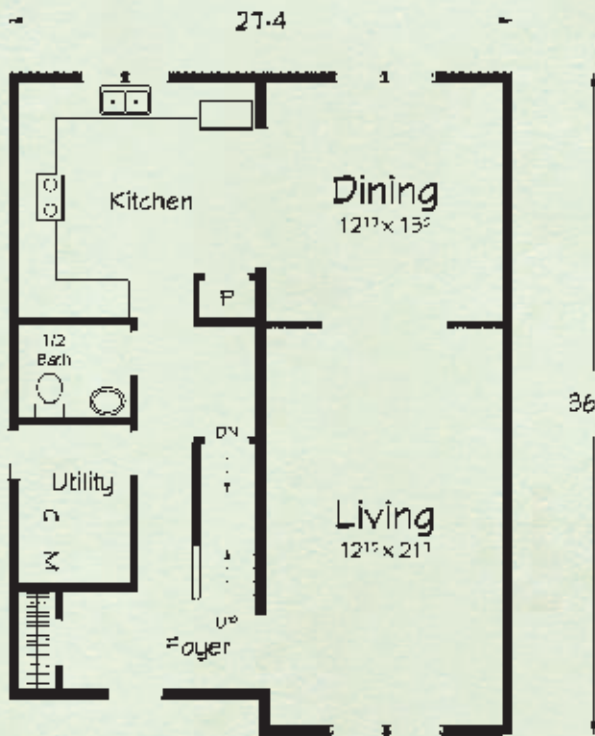
All home plans can be adapted for crawl-space foundation.
Please discuss the floor plan modifications with your
Ritz Craft home builder.

www.ritz-craft.com

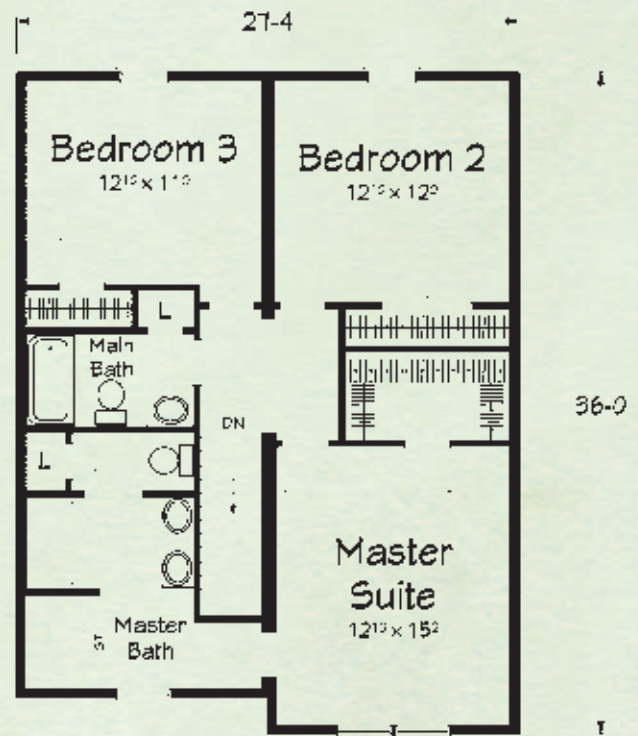
EDISTO



Two Story
1912 Square Feet



First Floor



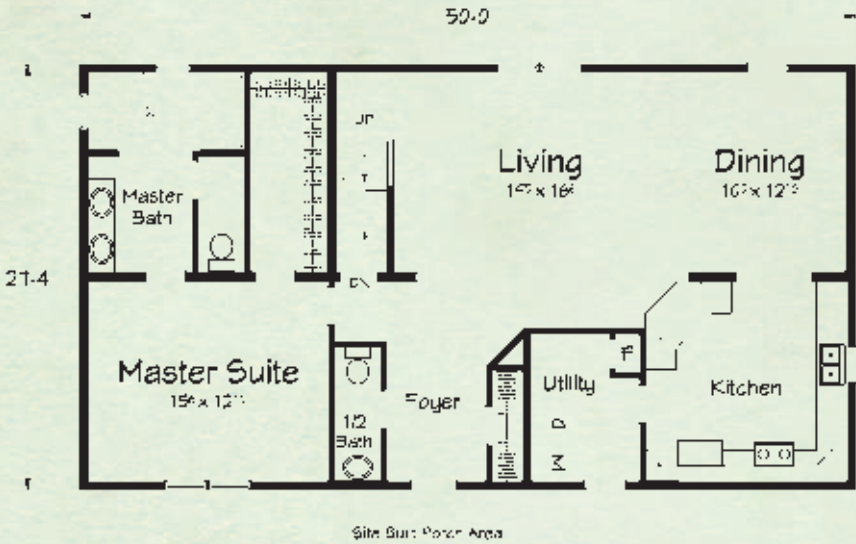
Second Floor

Artist renderings depict homes as they may be built on a typical site. Renderings may include optional or site installed features. Refer to "Heritage Collection" specifications and be sure to thoroughly discuss all aspects of your building project with your homebuilder.

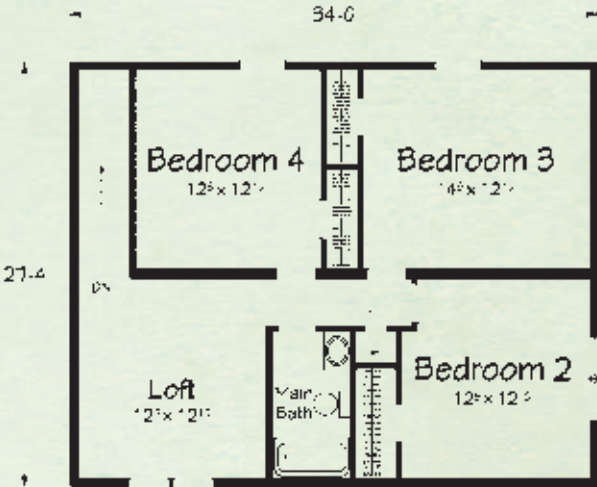


CRESTROCK

Two Story
2295 Square Feet



First Floor



Second Floor

Heritage
COLLECTION

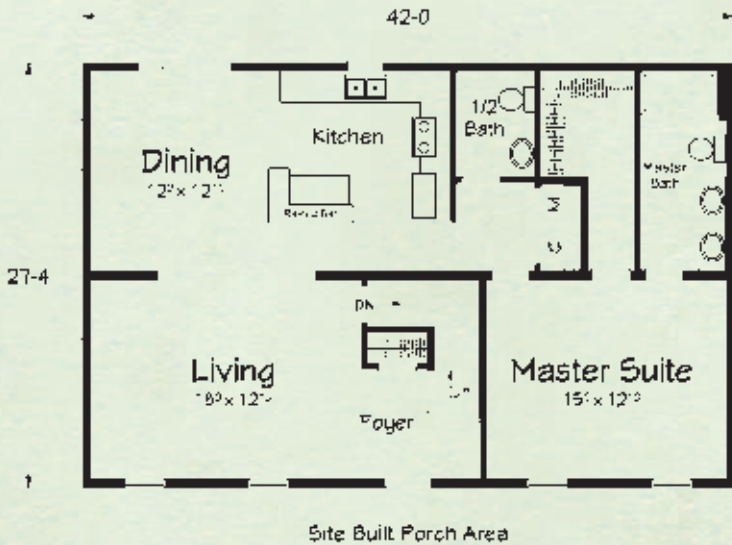
All home plans can be adapted for crawl-space foundation. Please discuss the floor plan modifications with your Ritz Craft home builder.

www.ritz-craft.com

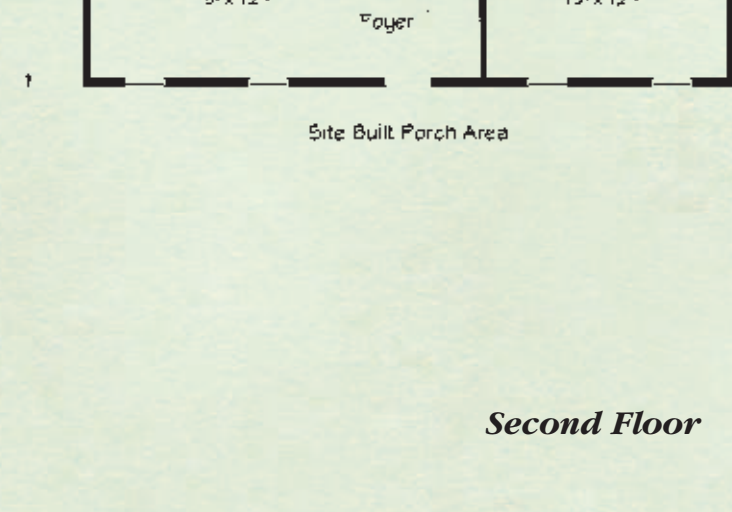
HARTSVILLE



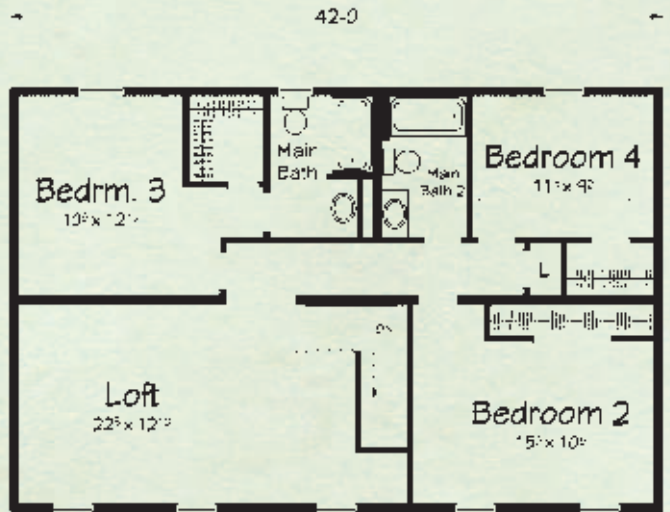
Two Story
2296 Square Feet



First Floor



Second Floor



Artist renderings depict homes as they may be built on a typical site. Renderings may include optional or site installed features. Refer to "Heritage Collection" specifications and be sure to thoroughly discuss all aspects of your building project with your homebuilder.



Heritage

COLLECTION

★ ★ ★



*Your Approved
Ritz-Craft
Home Builder:*

Approved homebuilders are independent business entities and are not agents of Ritz-Craft Corporation.

Due to occasional updating of building codes and Ritz-Craft's continuous product improvement, specifications are subject to change without prior notification. Be sure to request a copy of current specifications from your selected homebuilder.

